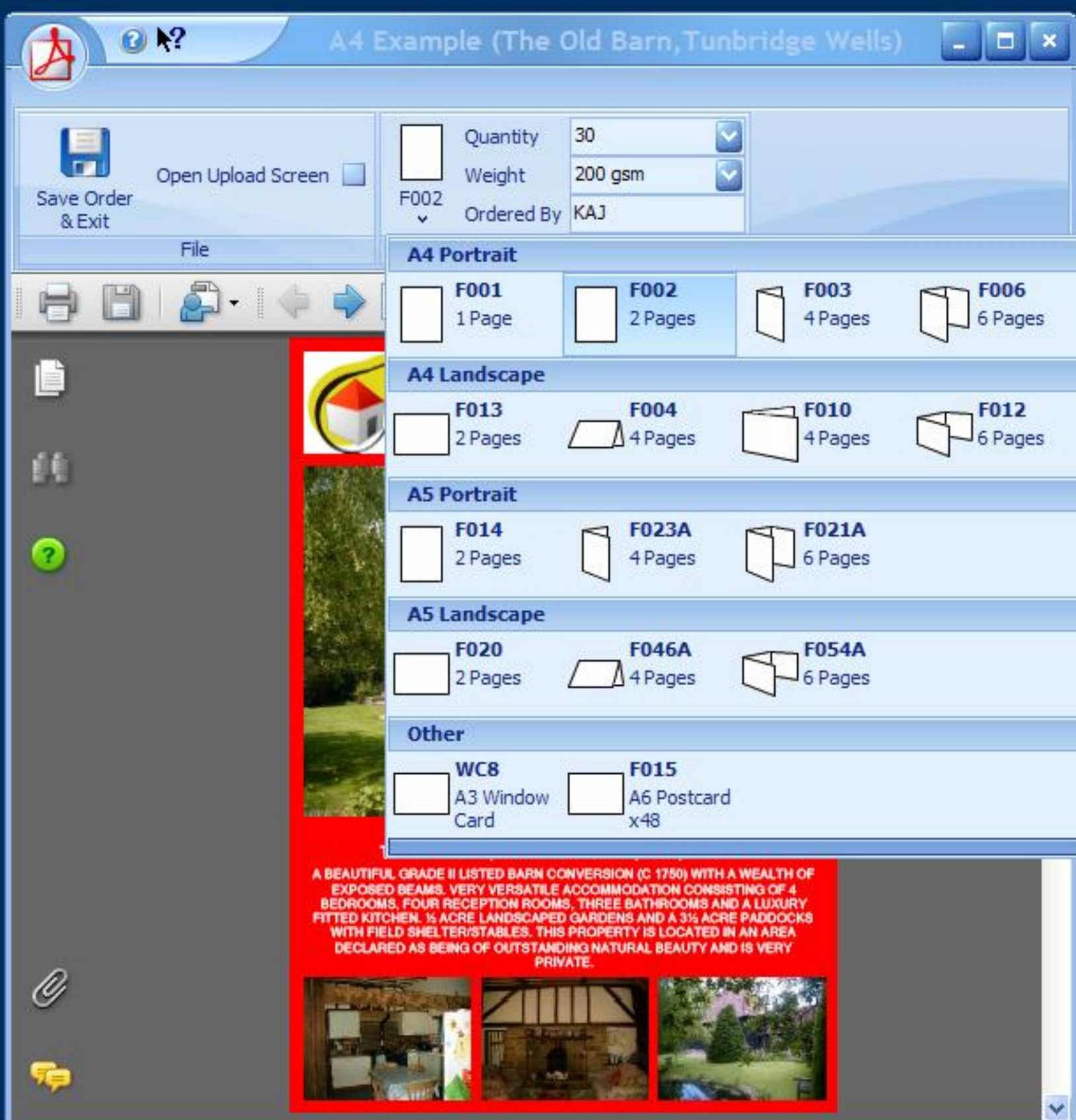




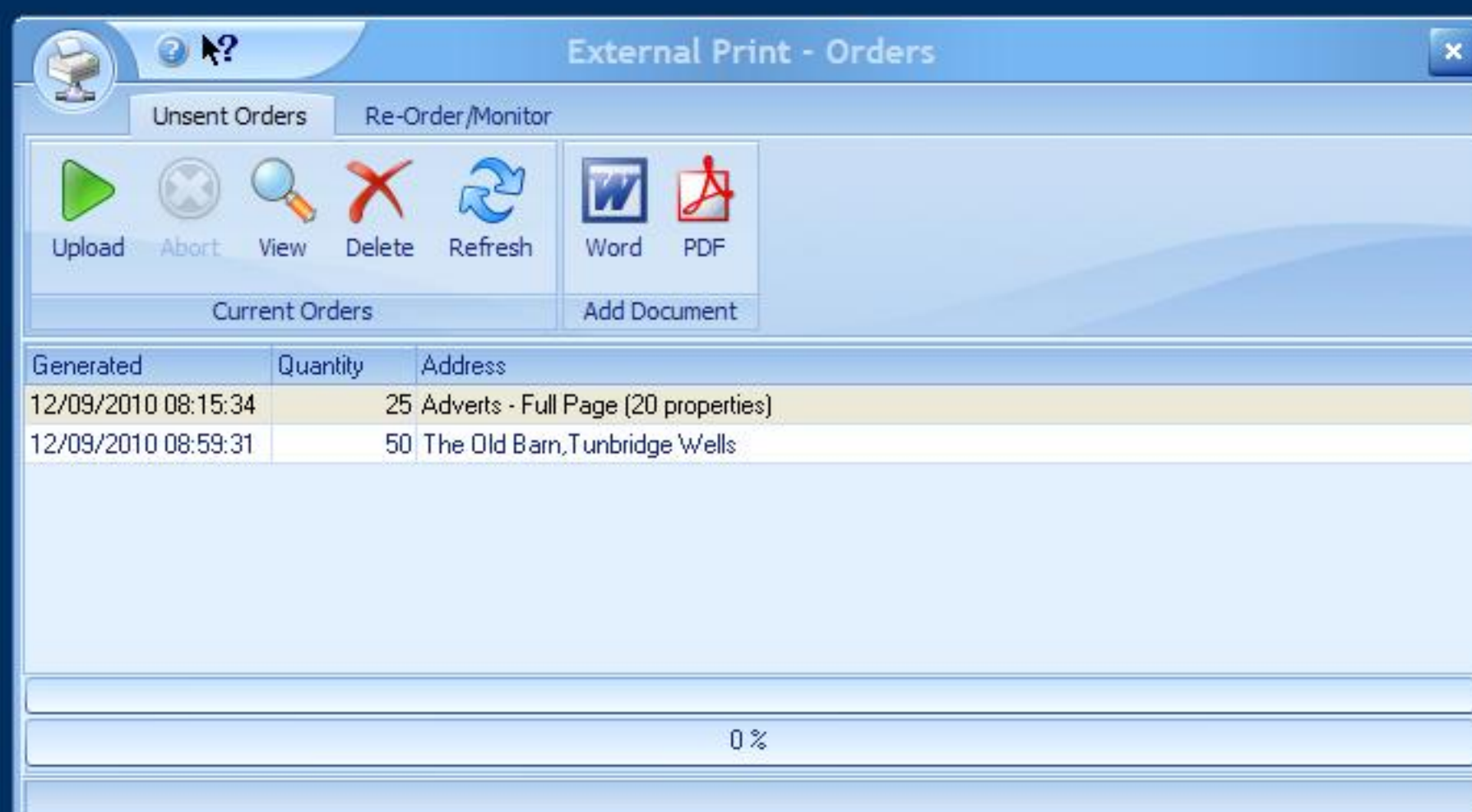
## ESTATE AGENT PRO ENTERPRISE ADDITIONAL INFORMATION



**Estate Agent Pro Enterprise incorporates a print upload interface to Ravensworth for the external printing of property particulars. Minimum quantities apply. An FTP account must be setup with Ravensworth before this facility can be used.**

**Payment for prints ordered is to be made directly to Ravensworth. Any external print company can actually be used, but the naming of the file being sent will use the Ravensworth format. Please also bear in mind that they may not support all products listed.**

The weight drop down list will normally include an option to have the document laminated which is only available at 250 gsm. Deliveries will be made next day by courier at very competitive rates. The quantity initially displayed is the minimum order quantity for the product selected.



Orders can then be uploaded in bulk from the External Print - Orders screen. Deliveries can be recorded and there is also a facility for re-ordering previous orders.

**New monthly pricing structure per branch: 1 branch £200 \* 2-4 branches £150 \* 5-9 branches £125 \* 10+ branches £100 (10% discount to existing users)**